

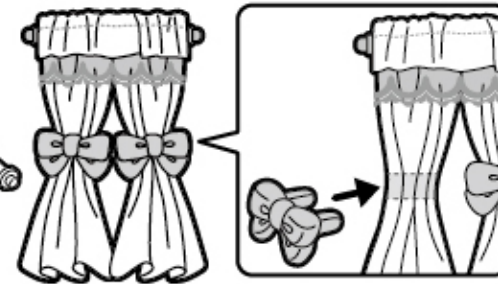
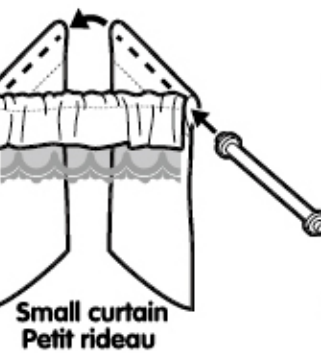
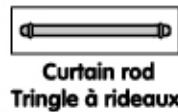
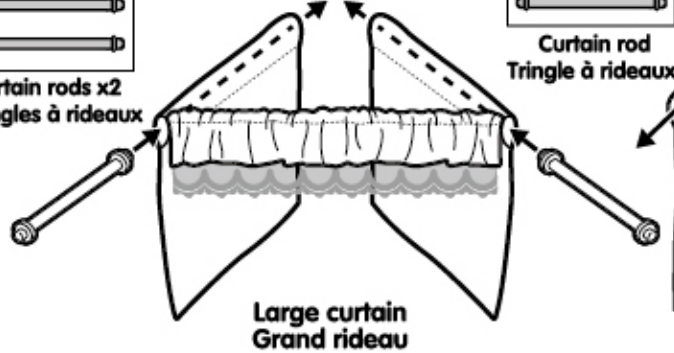
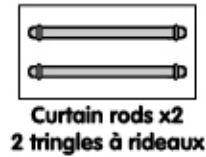
How to assemble curtains

Comment assembler les rideaux

Tiebacks x2
2 embrasses

1839 G18TK00

© EPOCH



How to attach curtains to Red Roof Country Home

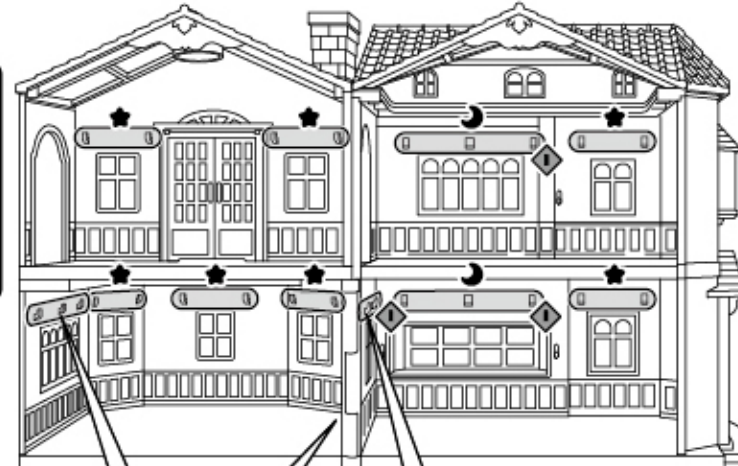
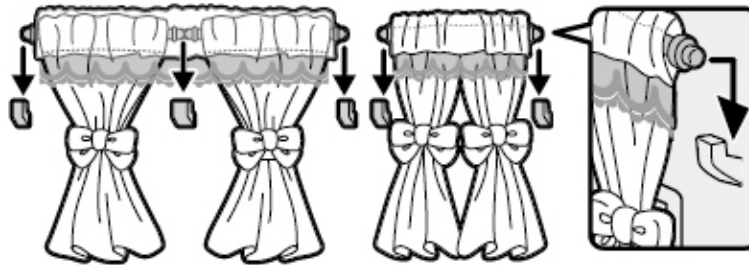
Areas to attach lamps and curtains

Comment installer les rideaux dans la maison de campagne au toit rouge

Où fixer les appliques et les rideaux

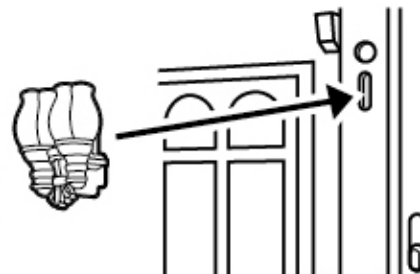
Large curtain/Grand rideau

Small curtain/Petit rideau



How to attach the wall lamps

Comment fixer les appliques



- ★ 9 Positions for small curtains
9 positions pour les petits rideaux
- ☾ 3 Positions for large curtains
3 positions pour les grands rideaux
- ◆ 3 Positions for wall lamps
3 positions pour les appliques

This set is only for the Red Roof Country Home
Cet ensemble est destiné uniquement à la maison de campagne au toit rouge

⚠ WARNING:
CHOKING HAZARD - Small parts.
Not for children under 3 years.

⚠ AVERTISSEMENT:
RISQUE D'ÉTOUFFEMENT - Petites pièces.
Ne convient pas aux enfants de moins de 3 ans.